

# SOUTHERN AFRICAN ROCK PYTHON

*Python natalensis*

**Dangerous, not venomous**



Has a broken yellow line on the tail - line is solid yellow in *P. sebae*. Scales smaller and smoother than those in *P. sebae*.

Thinner, lighter bar in front of and behind eye; darker and thicker in *P. sebae*



## Southern African Rock Python Facts

- Adults reach lengths of 5.5 m or more
- Western and southern Kenya
- Active at night; adults terrestrial; often in or near water
- Coils with head on top; hides in holes, reeds, thickets, rock fissures
- Juveniles are active predators; adults ambush prey
- Large curved teeth can inflict a painful bite wound
- Large individuals capable of constricting and suffocating a human

# CENTRAL AFRICAN ROCK PYTHON



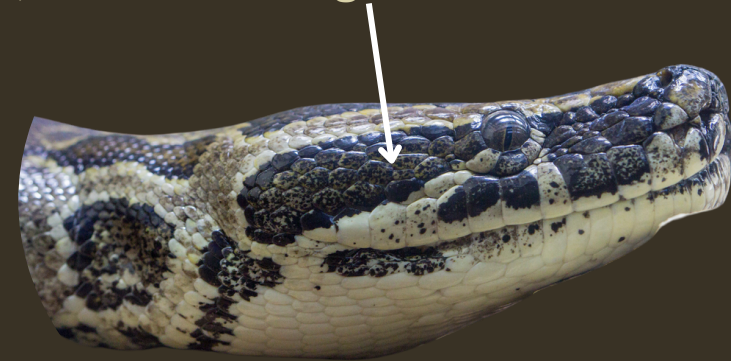
*Python sebae*

**Dangerous, not venomous**



Has a solid yellow line on the tail - broken yellow line in *P. natalensis*. Scales larger and rougher than those in *P. natalensis*.

Broad, dark bar in front of and behind eye; thinner and lighter in *P. natalensis*



## Central African Rock Python Facts

- Adults reach lengths of 6.5 m or more
- Western, central, and coastal Kenya
- Active at night; adults terrestrial; often in or near water
- Coils with head on top; hides in holes, reeds, thickets, rock fissures
- Juveniles are active predators; adults ambush prey
- Large curved teeth can inflict a painful bite wound
- Large individuals capable of constricting and suffocating a human