

FOR EDUCATIONAL PURPOSES:  
MAY NOT BE SOLD OR DISTRIBUTED WITHOUT PERMISSION

# Snakes of Kenya Booklet

PHOTOS BY STEPHEN SPAWLS USED WITH PERMISSION

A BOOKLET TO HELP PEOPLE IDENTIFY COMMON  
DANGEROUS AND HARMLESS SNAKES OF KENYA



# Navigating This Booklet

(Click on a snake's name to advance to that page)

- Puff adder
- Northeast African carpet viper
- Gaboon viper
- Rhinoceros viper
- Red spitting cobra
- Brown or Ashe's spitting cobra
- Black-necked spitting cobra
- Eastern or brown forest cobra
- Egyptian cobra
- Black mamba
- Green mamba
- Jameson's mamba

- Gold's tree cobra
- Boomslang
- Burrowing Asps
- Twig snakes
- Rhombic night adder
- Velvety-green night adder
- Forest night adder
- Kenya horned adder
- Kenya montane viper
- Variable or green bush viper
- Rough-scaled bush viper
- Mt. Kenya bush viper

Red = Dangerous

Orange = Use caution

Green = Harmless

East African garter snake

Powdered tree snake

Blanding's tree snake

Red-spotted beaked snake

Rufous beaked snake

Link-marked sand snake

Olive sand snake

Brown house snake

Green snakes

Kenya sand boa

Rhombic egg eater

White-lipped snake

Northern stripe-bellied sand snake

Kenya striped skaapsteker

Wolf snakes

Mole snakes

Jackson's tree snake

Blind snakes

Worm snakes

Red = Dangerous

Orange = Use caution

Green = Harmless

**Puff Adder**

***Bitis arietans***



***Dangerous***

Photo by Stephen Spawls  
Antivenom Available



# Northeast African Carpet Viper

*Echis pyramidum*



***Dangerous***

Photo by Stephen Spawls  
Antivenom Available



**Gaboon Viper**

***Bitis gabonica***



***Dangerous***

Photo by Stephen Spawls

Antivenom available



**Rhinoceros Viper**

***Bitis nasicornis***



***Dangerous***

Photo by Stephen Spawls

Antivenom available



**Red Spitting Cobra**

***Naja pallida***



***Dangerous***

Photo by Stephen Spawls  
Antivenom available





**Brown Spitting Cobra**     *Naja ashei*



***Dangerous***

Photo by Stephen Spawls  
Antivenom available



**Black-Necked  
Spitting Cobra**      *Naja  
nigricollis*



***Dangerous***

Photo by Stephen Spawls

Antivenom available



**Eastern  
Forest Cobra**

***Naja  
subfulva***



***Dangerous***

Photo by Stephen Spawls

Antivenom available



**Egyptian Cobra**

***Naja haje***



***Dangerous***

Photo by Stephen Spawls

Antivenom available



**Black Mamba** *Dendroaspis polylepis*



***Dangerous***

Photo by Stephen Spawls

Antivenom available



## Green Mamba *Dendroaspis angusticeps*



***Dangerous***

Photo by Stephen Spawls

Antivenom available



**Jameson's  
Mamba**

*Dendroaspis jamesoni*



***Dangerous***

Photo by Stephen Spawls

Antivenom available



**Gold's  
Tree Cobra**

*Pseudohaje goldii*



***Dangerous***

Photo by Stephen Spawls

Treat symptoms





**Boomslang**

***Dispholidus typus***



***Dangerous***

Photo by Stephen Spawls

Antivenom not available in Kenya

Treat symptoms

Note: Color and patterns highly variable



**Burrowing Asps**

***Atractaspis sp.***



***Dangerous***

Photo by Stephen Spawls

Treat symptoms

Note: blunt tail with sharp point



**Twig Snakes**

***Thelotornis sp.***



***Dangerous***

Photo by Stephen Spawls

Treat symptoms



**Rhombic  
Night Adder**

*Causus rhombeatus*



***Potentially harmful***  
***Use caution***

Photo by Stephen Spawls

Treat symptoms



**Velvety Green  
Night Adder**

***Causus resimus***



***Potentially harmful***  
***Use caution***

Photo by Stephen Spawls

Treat symptoms



**Forest  
Night Adder**

*Causus lichtensteinii*



***Potentially Harmful  
Use Caution***

Photo by Bill Branch

Treat symptoms



Kenya

Horned Adder

*Bitis worthingtoni*



**Potentially Harmful**  
**Use Caution**

Photo by Stephen Spawls

Treat symptoms



Kenya

Montane Viper

*Montatheris hindii*



**Potentially harmful**  
**Use caution**

Photo by Stephen Spawls

Treat symptoms





**Variable/Green  
Bush Viper**

***Atheris squamigera***



**Potentially harmful  
Use caution**

Photo by Stephen Spawls

Treat symptoms



# Rough-Scaled Bush Viper

*Atheris hispida*



**Potentially harmful**  
**Use caution**

Photo in Public Domain  
Treat symptoms



**Mt Kenya  
Bush Viper**

*Atheris desaixi*



**Potentially harmful**  
**Use caution**

Photo by Stephen Spawls

Treat symptoms



**East African  
Garter Snake**

*Elapsoidea loveridgei*



***Potentially harmful  
Use caution***

Photo by Stephen Spawls  
Treat symptoms



**Powdered  
Tree Snake *Toxicodryas pulverulenta***



***Potentially harmful*** Photo by Stephen Spawls  
***Use caution*** Treat symptoms



**Blanding's  
Tree Snake**

*Toxicodryas vexator*



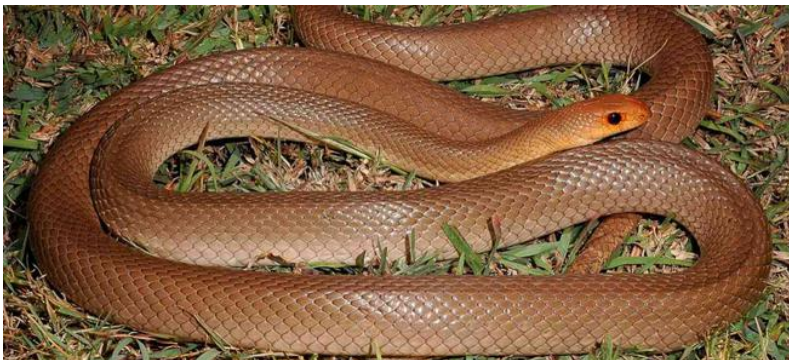
***Potentially harmful***  
***Use caution***

Photo by Stephen Spawls  
Treat symptoms



**Red-spotted  
Beaked Snake**

***Rhamphiophis  
rubropunctatus***



***Potentially harmful  
Use caution***

Photo by Stephen Spawls

Treat symptoms



**Rufous  
Beaked Snake**

***Rhamphiophis  
rostratus***



***Potentially harmful  
Use caution***

Photo by Stephen Spawls  
Treat symptoms





**Link-marked  
Sand Snake**

*Psammophis biseriatus*



***Potentially harmful***  
***Use caution***

Photo by Stephen Spawls

Treat symptoms



**Olive Sand Snake**

***Psammophis  
mossambicus***



***Potentially harmful*** Photo by Stephen Spawls

***Use caution***

Treat symptoms



## Brown House Snake *Boaedon capensis*



**Harmless**

Photo by Stephen Spawls

Note: sometimes white lines above and below eye are absent



**Green Snakes**

***Philothamnus* sp.**



**Harmless**

Photo by Stephen Spawls



Kenya  
sand boa *Eryx colubrinus*



**Harmless**

Photo by Viki  
CCA-SA3 Unported License



**Rhombic Egg Eater**

***Dasypeltis scabra***



**Harmless**

Photo by Stephen Spawls



*Crotaphopeltis*  
White-lipped Snake *hotamboeia*



**Harmless**

Photo by Stephen Spawls



**Northern Stripe-Bellied  
Sand Snake**

*Psammophis  
sudanensis*



**Harmless**

Photo by Stephen Spawls





**Kenya Striped  
Skaapsteker**

***Psammophis  
multisquamis***



**Harmless**

Photo by Stephen Spawls



**Wolf Snakes**

*Lycophidion sp.*



**Harmless**

Photo by Stephen Spawls



**Mole Snake**

***Pseudaspis cana***



**Harmless**

Photo by Stephen Spawls



**Jackson's  
Tree Snake**

*Thrasops  
jacksonii*



**Harmless** Photo by Stephen Spawls



**Blind Snakes**

***Afrotyphlops sp.***



**Harmless**

Photo by Stephen Spawls



**Worm Snakes**

***Leptotyphlops sp.***



**Harmless**

Photo by Stephen Spawls



FOR EDUCATIONAL PURPOSES:  
MAY NOT BE SOLD OR DISTRIBUTED WITHOUT PERMISSION

**This booklet was created for educational purposes by:**

**Jonathan E. Twining**

**on behalf of the**

**Snake Community Action Network**

**and the**

**Upendo Conservation Area**

**January 2024**



NOTE: NOT EVERY SNAKE SPECIES IN KENYA  
IS REPRESENTED IN THIS BOOKLET

